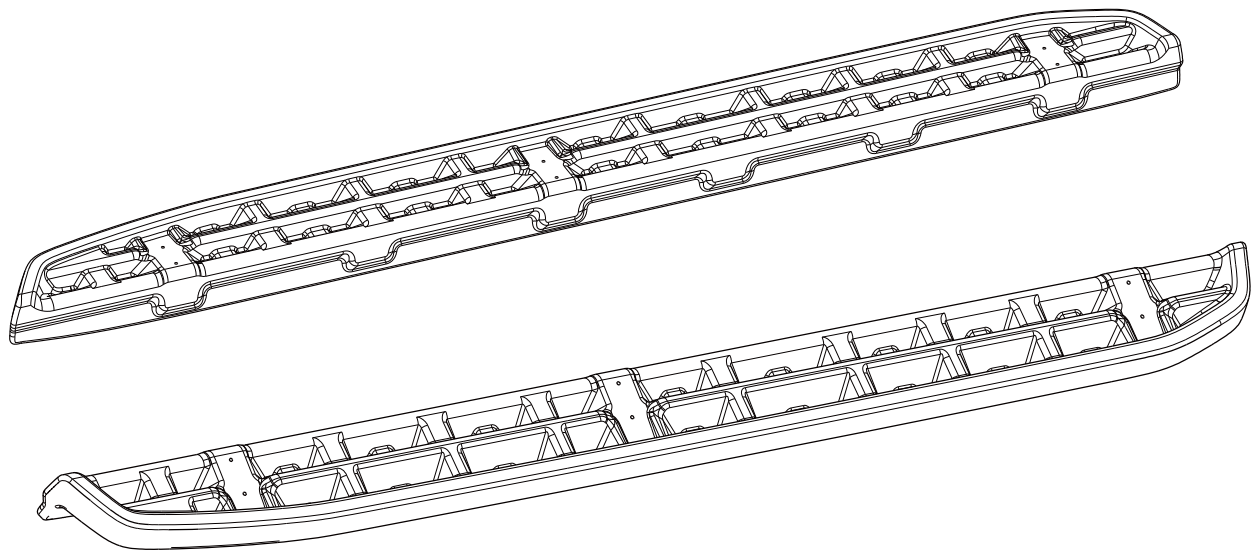
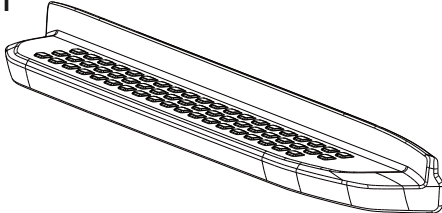
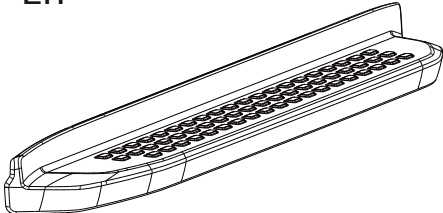
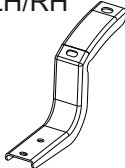
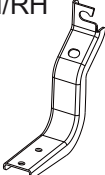
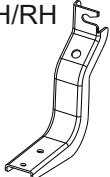
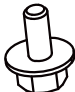
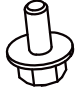



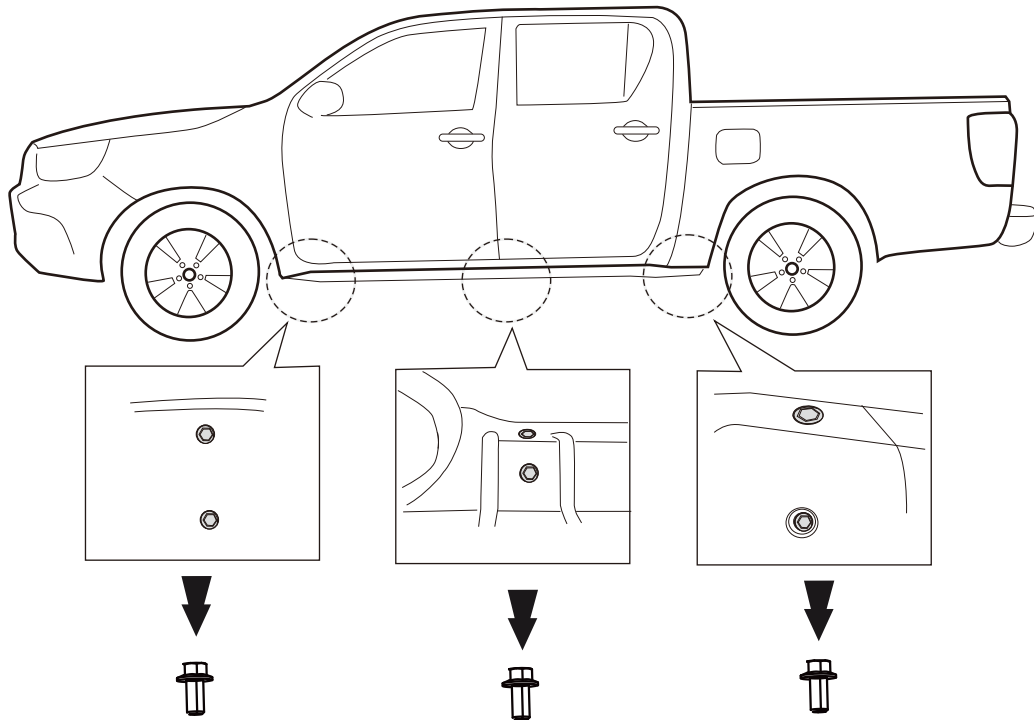
For : FORD RANGER Y2022



<p>A RH</p>  <p>X1</p>	<p>B LH</p>  <p>X1</p>		
<p>C FORNT COMMON LH/RH</p>  <p>X2</p>	<p>D MIDDLE COMMON LH/RH</p>  <p>X2</p>	<p>E REAR COMMON LH/RH</p>  <p>X2</p>	
<p>F M 6</p>  <p>X12</p>	<p>G M 8</p>  <p>X12</p>	<p>H M 8 (washer) OD 22 mm</p>  <p>X12</p>	
<p>AEROKLAS</p>	<p>102110000869</p>	<p>9/01/2023</p>	<p>2/5</p>

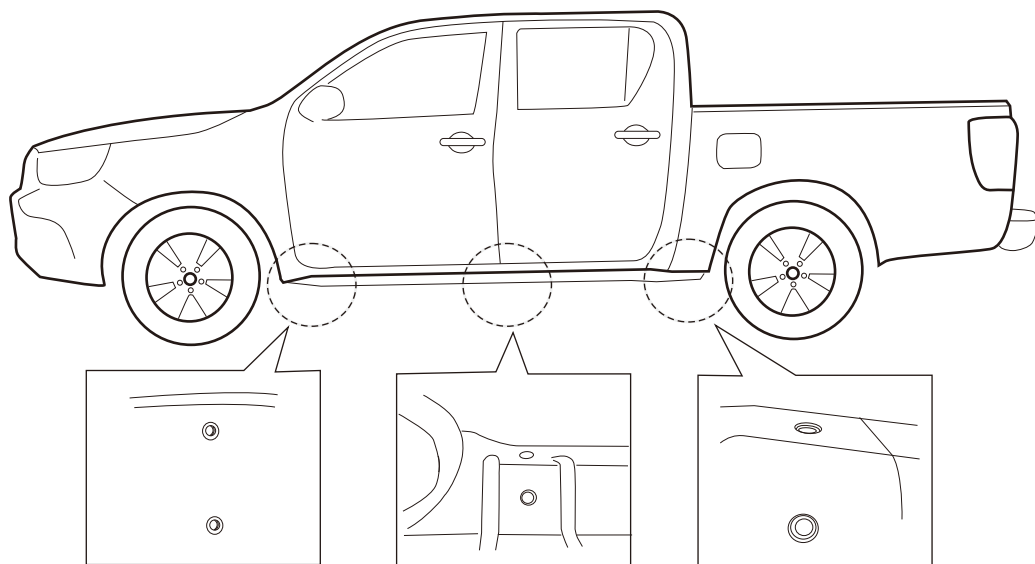
1

WITH VEHICLE SCREW



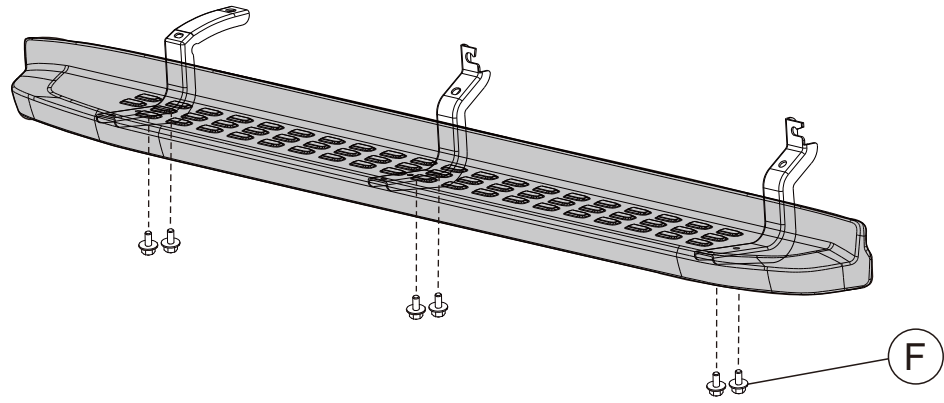
REMARK : INCASE WITH VEHICLE SCREW, USER HAS TO TAKE OFF VEHICLE SCREW AND KEEP THEM FOR INSTALLATION BETWEEN BRACKET AND VEHICLE

WITHOUT VEHICLE SCREW



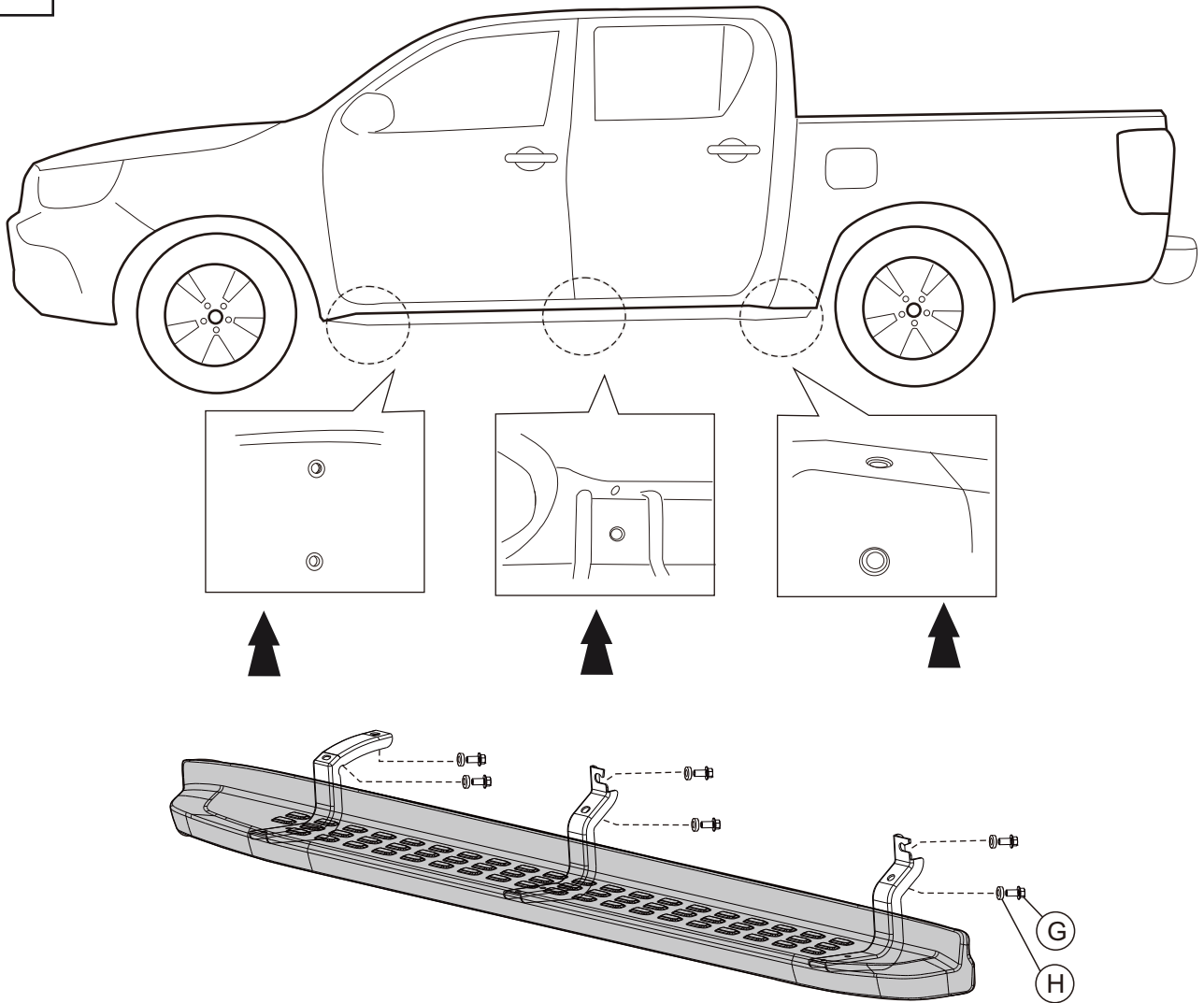
REMARK : INCASE WITHOUT VEHICLE SCREW, USER HAS TO USE THE SCREW IN BRACKET (SET) FOR INSTALLATION BETWEEN BRACKET AND VEHICLE

1

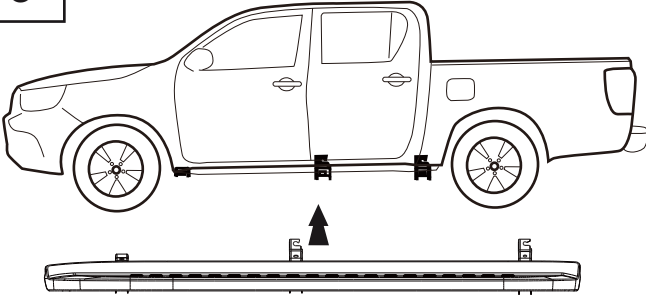


REMARK : 1.) INSTALL BRACKET (FRONT/CENTER/REAR) WITH SIDE STEP
2.) TIGHTEN LOOSE SCREW BETWEEN BRACKET AND
SIDE STEP FOR ALL POSITIONS

2



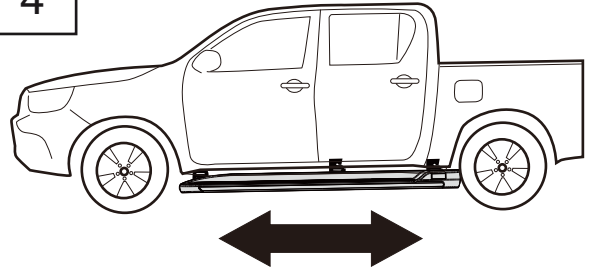
3



! BE CAREFUL NOT TO DAMAGE THE PAINT WORK
TIGHTEN LOOSE SCREW BETWEEN BRACKET
AND VEHICLE FOR EACH POSITION OF BRACKET



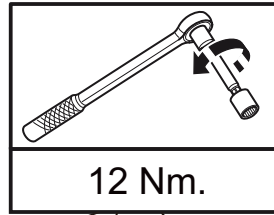
4



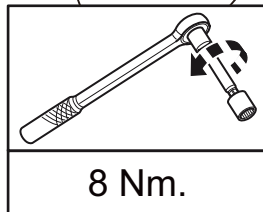
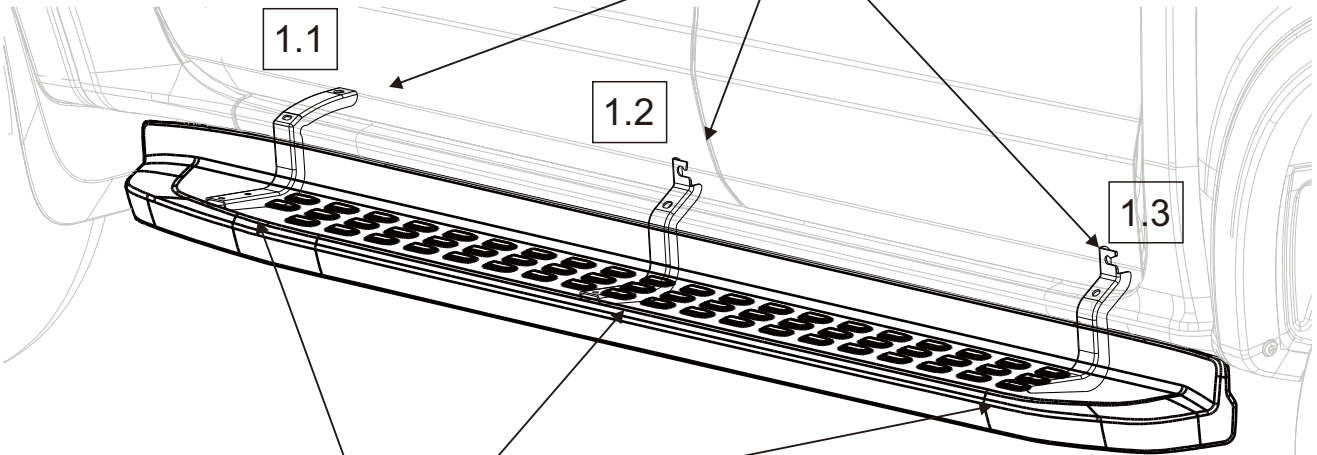
ADJUST SIDE STEP
FORD HOLE POSITION WITH TIGHTEN
SCREW WITH TORQUE

5

NOTE : VEHICLE NOT SHOWN FOR CLARITY
LHS SHOWN RHS SYMETRICALLY OPPOSITE



**X6
PER SIDE**



**X6
PER SIDE**

REMARK : 1.) TIGHTEN SCREW FOR ALL POSITIONS AS PICTURE , USE TORQUE 8 Nm.
6 POSITIONS FOR BRACKET AND SIDE STEP AND TORQUE 12 Nm. 6 POSITIONS
FOR BRACKET AND VEHICLE